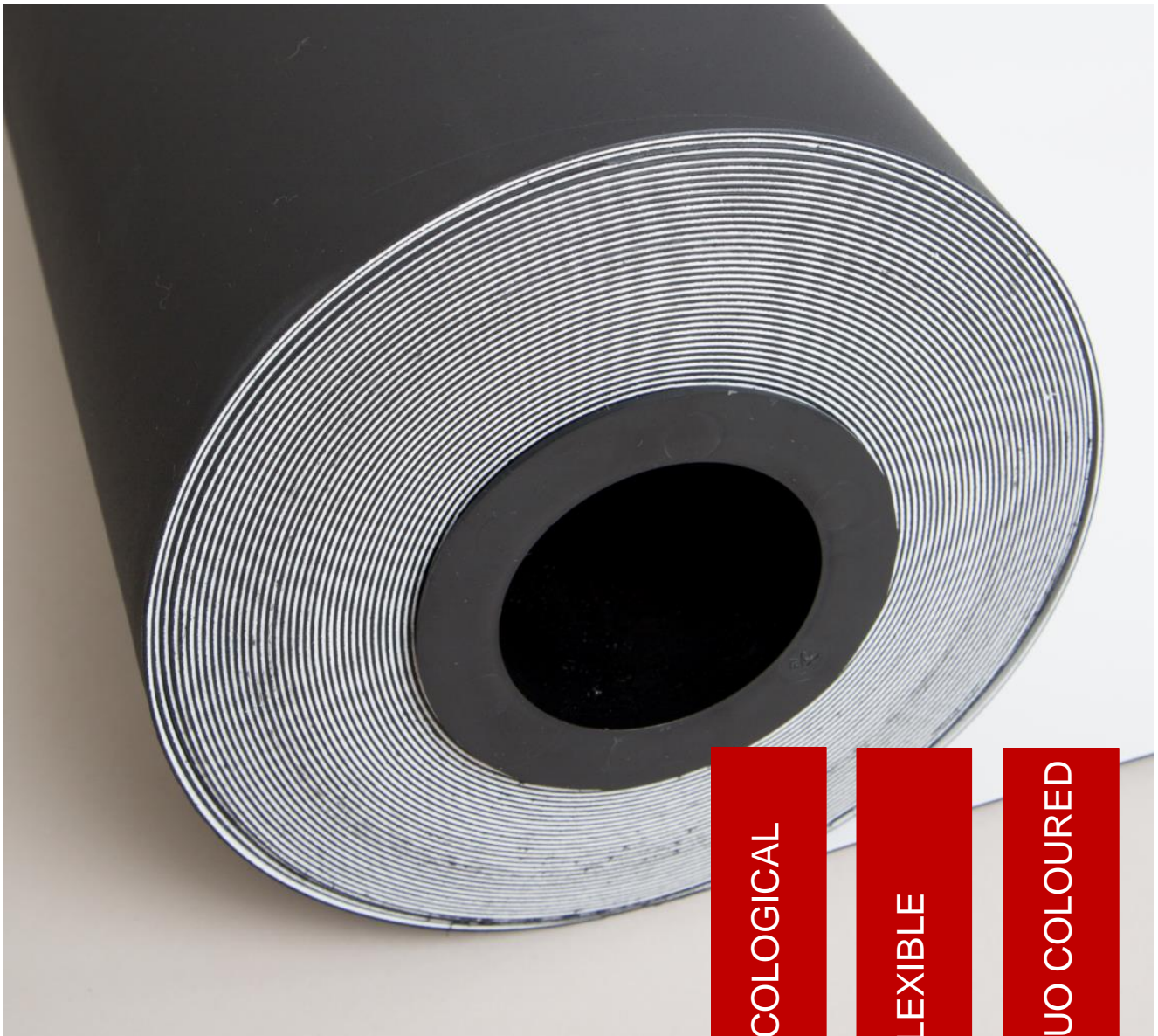


# POLYFIN DUO®

## THE NEXT GENERATION FPO/TPO ROOFING MEMBRANE



ECOLOGICAL

FLEXIBLE

DUO COLOURED

  
**POLYFIN AG**  
Flachdachtechnologie der Zukunft



## POLYFIN DUO® – THE TWO-COLOUR WATERPROOFING MEMBRANE MADE OF FPO

Polyfin Duo® is an FPO waterproofing membrane with a white top layer, central reinforcement and dark-coloured bottom layer. It was specially developed to support POLYFIN AG customers in the realisation of large-scale projects in their competitiveness - while at the same time maintaining proven core properties.

Polyfin Duo® membranes are characterised by the fact that the proven formulation concept based on FPO/PE is consistently pursued.

POLYFIN AG continues to rely on the use of a halogen-free flame retardant concept in this product range - the unique formulation makes it possible!

The ideal solution from an economic, ecological and processing point of view: Polyfin Duo® membranes combine all the advantages of the

proven and well-known Polyfin® membranes:

- Unique formulation based on FPO/PE
- PVC-free, free from halogens such as chlorine or bromine, free from plasticisers, free from heavy metals
- Highly resistant to hail impact
- Highly resistant to ageing
- Highly flexible at low temperatures
- Optimised flame retardant properties

Polyfin Duo®: Universally applicable! Whether with central glass fleece reinforcement or with glass fleece plus scrim reinforcement. They can be mechanically fastened or laid loosely under ballast.

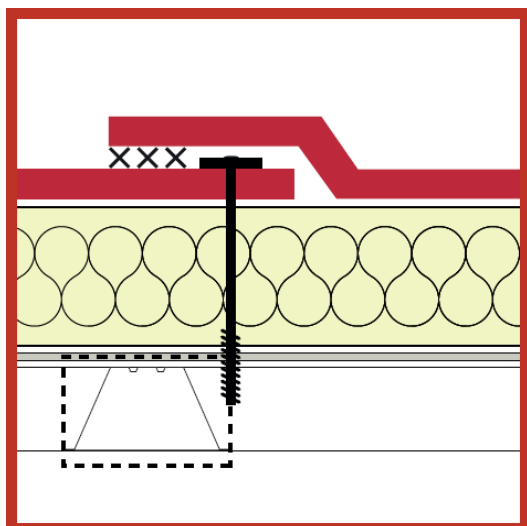
With glass fleece reinforcement:

Polyfin Duo® 3020 / 3020 rd (2,0 mm)  
Polyfin Duo® 3018 / 3018 rd (1,8 mm)  
Polyfin Duo® 3015 (1,5 mm)

Reinforcement consisting of glass fleece and polyester scrim:

Polyfin Duo® 3020 GS (2,0 mm)  
Polyfin Duo® 3018 GS (1,8 mm)  
Polyfin Duo® 3015 GS (1,5 mm)

## Solutions - Planning instructions - Areas of application



### MECHANICALLY FASTENED

With glass fleece reinforcement:

Polyfin Duo® 3020 / 3020 rd (2,0 mm)

Polyfin Duo® 3018 / 3018 rd (1,8 mm)

Polyfin Duo® 3015 (1,5 mm)

With reinforcement consisting of glass fleece and polyester scrim:

Polyfin Duo® 3020 GS (2,0 mm)

Polyfin Duo® 3018 GS (1,8 mm)

Polyfin Duo® 3015 GS (1,5 mm)

Proof of „Broof (t1)“ fire resistance classification (abridged version). The corresponding Polyfin Duo® membranes can be laid on these insulation or roof substrates

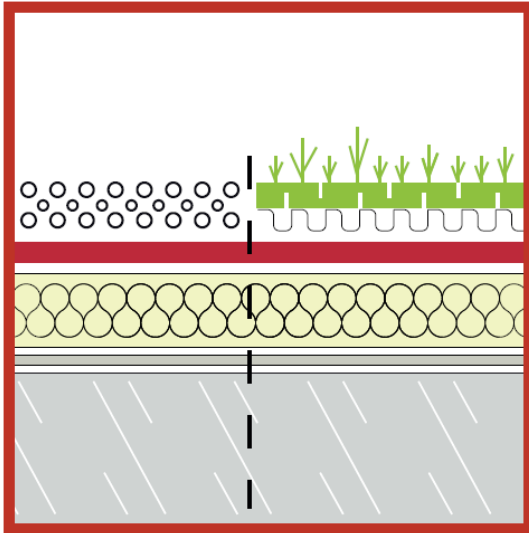
	Thermal insulation as substrate	Polyfin Duo® 3015	Polyfin Duo® 3018 /3018 rd Polyfin Duo® 3020 /3020 rd  Polyfin Duo® 3015 GS , 3018 GS, 3020 GS
1)	PU/PIR ≥ 20°	✓	✓
2)	Mineral wool ≥ 20°	✓	✓
3)	Refurbishment of bitumen sheets ≥ 20° (incl 300 g/m² PES fleece as protection layer, in acc. to CEN/TS 16459	✓	✓
4)	Refurbishment of roofs with single ply synthetic membranes ≥ 20° in acc. to CEN/TS 16459	✓	✓
6)	EPS without fire protection layer <20°	–	✓

### Notes:

Overview based on applicable evidence of the "Broof (t1) classification according to EN 13501-5. Simplified representation. The exact wording of the respective classification reports must be observed. National application rules may differ.

Roof pitch: Results obtained for pitches ≥ 20° are also applicable for lower roof pitches in accordance with CEN/TS 16459.

Renovation of "old roofs (plastic and bitumen)": Prerequisite for the applicability of the classification reports are CEN/TS 16459, national requirements and the Polyfin Installation Guideline.



## UNDER BALLAST

With glass fleece reinforcement (root resistance tested to EN 13948 and FLL procedure)

Polyfin Duo® 3020 / 3020 rd (2,0 mm)

Polyfin Duo® 3018 / 3018 rd (1,8 mm)

Polyfin Duo® 3015 (1,5 mm)

With reinforcement consisting of glass fleece and polyester scrim:

Polyfin Duo® 3020 GS (2,0 mm)

Polyfin Duo® 3018 GS (1,8 mm)

Polyfin Duo® 3015 GS (1,5 mm)

*All information has been compiled to the best of our knowledge and belief on the basis of many years of experience. No claims for compensation can be derived from this.*

*The large number of possible conditions of use make it necessary for the user of the products to carry out their own professional testing and handling. We reserve the right to make changes that may be necessary in the light of new findings and due to the further development of standards, regulations and technical rules in the field of construction technology.*

*With the publication of a new edition, this edition loses its validity. The general terms and conditions apply.*



POLYFIN AG

Polyfinstraße 1

D-74909 Meckesheim

Telefon: +49 (0) 62 26 / 99 39 4-0

Telefax: +49 (0) 62 26 / 99 39 4-99

[www.polyfin.de](http://www.polyfin.de)

[info@polyfin.de](mailto:info@polyfin.de)



F12.143/003/1123

