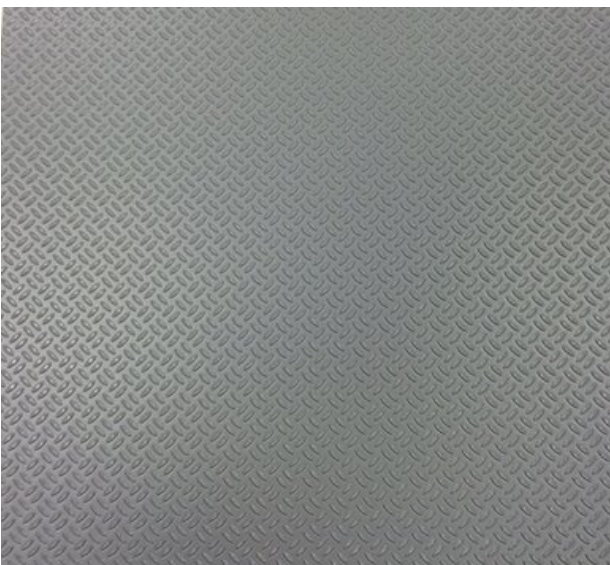


8106/003-02-750

# Polyfin Wartungswegbahn

<b>Product</b>	Synthetic roofing sheet with glass-fibre reinforcement, FPO, bitumen compatible The POLYFIN maintenance walkway membrane is an FPO membrane with a textured surface that is used for walkway protection of flat roof waterproofing (e.g. walkways for maintenance work). Due to thermally induced changes in the length of the product itself, and also of the roof sealings on which it is laid, a certain evenness in the surface cannot be guaranteed as a property. If this is necessary on the object, it is recommended to form the maintenance paths with concrete slabs (check statics), or to install a walkway grating system anchored in the supporting structure.
<b>Top side</b>	grey (embossed profile)
<b>Bottom side</b>	grey
<b>Intended use</b>	<ul style="list-style-type: none"> <li>• Protective layer for the roofing sheet, marking of walkways</li> </ul>
<b>Application</b>	Hot air welding method
<b>Packaging</b>	12 rolls of 20 m x 0.75m = 180 m <sup>2</sup> per pallet

Characteristics	Testing method	Unit	Result
Visible defects	EN 1850-2		Keine
Length	EN 1848-2	m	20
Width	EN 1848-2	m	0,75
Thickness	EN 1849-2	mm	ca. 2,1
Mass per unit area	EN 1849-2	kg/m <sup>2</sup>	ca. 2,1
Reaction to fire test	EN 13501-1	Klasse	E
Slip resistance	DIN 51130		R 10



The declared data are indices based on the statistical quality control and refer to the date of production. Consider state of the art, standards, legal provisions and guidelines for the suitability of the mentioned field of application and application method. All specifications are without obligation. The user must assess the suitability of the product for the particular purpose and ensure the user's access to the current version of the product data sheet.

**Subject to alteration without notice.**

Storage conditions: The products have to be stored in original packaging, being protected from direct sun light, UV-beams and extreme conditions like heat, frost, moisture, etc. During cold season store the products in a frost-free area (+5°C) for 12 hours before application.

**Development, Production and Sales of our products according to ISO 9001.**